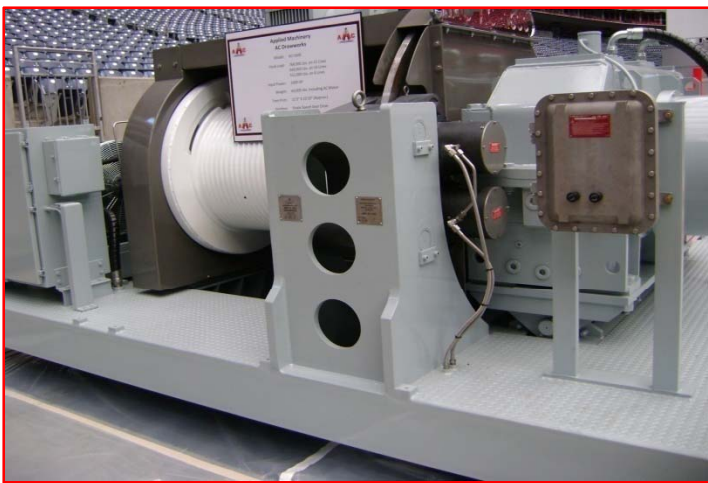


AMC Electric AC Drawworks

AMC offers a new alternative to the drilling industry and our design uses the most current technology for a fraction of the cost. These AC drawworks not only have the newest design in the market today, but also exhibit the safest features currently offered by any manufacturer.



Features of the AC Drawworks that AMC currently offers:

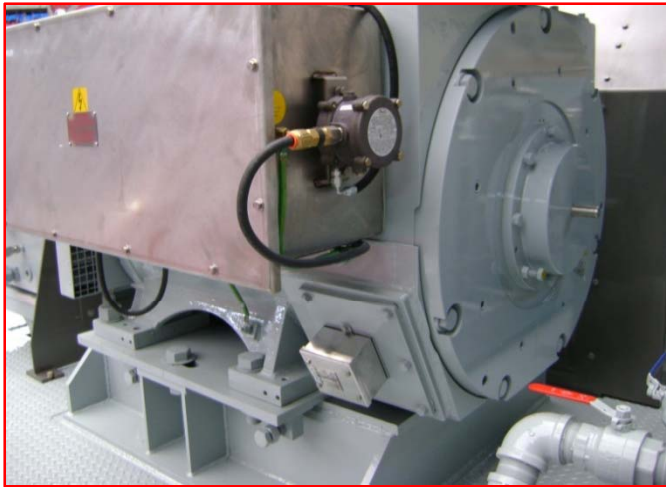
- Small self-contained footprint.
- Lighter and less maintenance than a conventional drawworks.
- AC motor braking provides efficient and cost effective operation.
- Self contained oil cooling system for transmission and drum shaft bearing assembly.
- Industry proven single speed gear drive for quiet and reliable operation. No roller chains like conventional drawworks. Two speed transmission is an available option.
- Provides wide operating speed range, electronic braking, accurate speed, torque, and position control.

RATED HP	AMC MODEL	AC MOTOR (S)	DEPTH (FT)
1000 HP	AC-1000	ONE (1) 1150HP GEB22	12,000'
1600 HP	AC-1600	ONE (1) 1600HP GEB28	16,000'
2000 HP	AC-2000	TWO (2) 1150HP GEB22	20,000'
3000 HP	AC-3000	TWO (2) 1600HP GEB28	30,000'

* HP=Horse Power, #=Pounds, ' = Feet, " =Inches

AC Drawworks Braking Features

AMC offers a new alternative to the drilling industry and our design uses the most current technology for a fraction of the cost. These AC drawworks not only have the newest design in the market today, but also exhibit the safest features currently offered by any manufacturer.



Features of the AMC Electric AC Drawworks braking:

- Primary braking is by AC motor regeneration. Regenerative braking is a form of dynamic braking in which the power is dissipated back into the main AC line, rather than through resistors. This eliminates the wasting of power and also reduces the amount of heat created in the resistors.
- Hydraulic mechanical braking is for parking or emergency stopping. An Optional air cooled caliper brake or water cooled disc brakes can be incorporated for parking/emergency braking.
- Caliper brakes normally activate after primary ac motor braking has stopped or slowed the drum.
- Load control achieved without conventional brakes while maximizing safety.



RATED HP	DRUM SIZE (IN)	PARK/E-STOP	GROOVE
1000 HP	30" DIA x 37.5" LENGTH	ONE (1) CALIPER SET	1-1/4"
1600 HP	30" DIA x 37.5" LENGTH	ONE (1) CALIPER SET	1-3/8"
2000 HP	36" DIA x 56" LENGTH	TWO (2) CALIPER SETS	1-1/2"
3000 HP	40" DIA x 60" LENGTH	TWO (2) CALIPER SETS	1-5/8"

* HP=Horse Power, #=Pounds, ' = Feet, "=Inches